



## SIERRA DATA CENTERS

The Pittsburgh Sierra Data Center facility, located in the heart of downtown Pittsburgh, is one of the most secure, connected and power reliable buildings in the region.

### Why Sierra Data Centers?

#### Access Security

- Two-factor authentication  
Key fob and biometrics
- Access recorded 24/7/365 IP based motion detecting video surveillance access control systems

#### Rack Security

- Racks individually locked
- Larger, secured caged spaces and suites also available

#### Connectivity

- Over 3,000 lines of fiber from over 10 major connectivity providers

#### Power Redundancy

- A and B side power delivered directly into each rack 120V or 208V through UPS systems
- Multiple power grid connections
- 1.45MW generator with 16000-gallon diesel fuel tanks

#### HVAC Redundancy

- Redundant generator connected Liebert HVAC Systems

#### Monitoring Systems

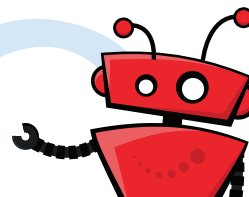
- Multiple automated monitoring systems
- Immediate notification delivered to data center personnel as soon as any environmental, power, connectivity, or security warning thresholds are breached

#### Fire Prevention

- Dry pipe sprinkler systems
- Very early smoke detection monitoring
- Standard fire extinguisher availability

#### Space Availability

- 4,500 square feet of raised floor space available
- Additional 9,000 square feet available



## Data Center and Hosting Services

- Platform as a Service
- Virtual servers
- Infrastructure as a Service
- Colocation
- Cloud computing services
- Website hosting
- Storage area network (SAN) services
- MS Exchange, SPAM filtering, CRM hosting
- Firewall and intrusion detection
- File and tape backup with rotation off-site storage
- Remote hands access for customer authorized administrators

## Support Services

Sierra Data Centers in conjunction with our expert engineering team at Sierra Experts provide a wide range of IT services.

### Day-to-day IT support including:

- Server and Infrastructure system architecture and design
- Operational and security reviews
- Installation and configuration
- Proactive 24x7 system monitoring of servers and networks
- Diagnosing system performance and operational issues
- Ongoing server and network management
- On-site Engineering support 24x7x365

